

Environmental Sustainability Plan

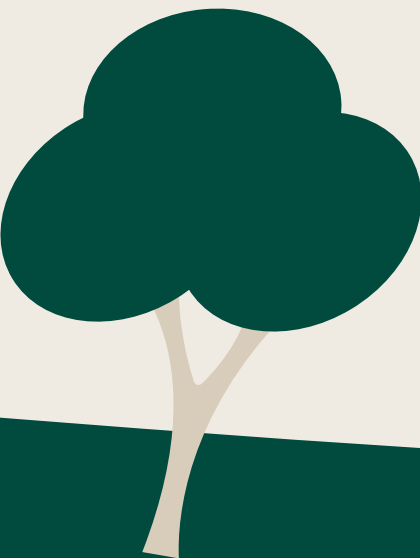
2026 – 2027



West Beach Parks
holiday · sport · community

Contents

- Overview 2
- Scope of The Plan..... 3
- Our Environmental Values..... 4
- Climate and Nature 5
 - Carbon Management and Emissions Reduction 5
 - Low Footprint Stays..... 5
 - Nature and Biodiversity 5
 - Initiatives, Targets and Measures..... 5
- Smart Purchasing and Waste Management 6
 - Initiatives, Targets and Measures..... 6
 - Reduce Waste Going to Landfill 7
 - Smart Purchasing 7
- Education, Engagement and Brand..... 8
 - Education 8
 - Engagement 8
 - Green Brand and Accreditation..... 8
 - Initiatives, Targets and Measures..... 8
- Governance Framework 9
 - Roles and Responsibilities..... 9
 - Measurement, Monitoring and Reporting 9
 - Resourcing..... 9
- Appendix A—Action List 10



Acknowledgment of Country

West Beach Parks acknowledges the traditional custodians of the land and pays respect to Elders past, present and emerging. We recognise the ongoing living cultures of Australia’s First People and their unique cultural and spiritual relationship to place.

Overview

West Beach Parks (“WBP”) is a world-class tourism, sport and recreation precinct, providing exceptional leisure experiences. WBP is bound by the West Beach Recreation and Reserve Act 1987. The Reserve is an area of significant natural assets and houses commercial and community facilities including accommodation, boating, a coastal park, golfing, leisure and sports.

We are committed to our role as custodian of the West Beach Recreation Reserve and to enhancing and promoting its environmental sustainability for today and for generations to come.

WBP is committed to environmental sustainability and responsible stewardship of our assets and operations. This commitment is articulated through our Environmental Sustainability Policy, which guides our efforts to operate in a manner that is both sustainable and accountable.

With the launch of our third Environmental Sustainability Plan, we aim to elevate this commitment further—positioning WBP as a leader in environmental management within the tourism and recreation sector.

This two-year plan will see WBP accelerate progress in its approach to the environment with some exciting new initiatives. These will further incorporate sustainability into our core functions and

help our guests, suppliers and partners to increase their understanding and awareness of environmental matters and, in turn, contribute to our strategic goals and the targets within this plan.

Our commitment to managing environmental matters and grasping the opportunities it presents is steadfast. It makes good business sense, evidenced in outcomes to date including enhanced safety, strong risk mitigation, increased operational efficiency, cost savings, positive outcomes for nature and our brand plus benefits for our employees, customers, lessees, suppliers and stakeholders.

Operating a commercial business needs a balance between environmental, community and economic outcomes and we are focused on all three, believing they are complementary to one another and to long-term sustainability.

Environmental sustainability is central to WBP Master Plan and Landscape Plan and to our ongoing strategy and vision. It’s our future! This plan aligns with various State and SA Government operational initiatives and targets including to reduce carbon emissions to Net Zero and to better manage waste. For the first time, it also incorporates relevant United Nations Sustainable Development Goals.

Climate and Nature

- Develop a carbon management and emissions reduction plan
- Develop “Low footprint stays” initiative
- Nature and biodiversity positive programs

Smart Purchasing and Waste Management

- Reduce waste going to landfill and overall waste disposal
- Sustainable purchasing decisions and outcomes

Education, Engagement and Brand

- Educate staff and guests
- Engage people in activities
- Green branding and accreditation

Scope of the Plan

By 'environment', we refer to the landscapes, water, plants and animals that provide significant richness to West Beach Recreation Reserve and beyond.

As stewards of West Beach Recreation Reserve, our role is to protect and enhance our natural assets in addition to maintaining the land and buildings we occupy. The environmental impact of our operations includes the consumption of energy and water, waste generation and disposal, servicing our visitor accommodation, the goods and services we buy, and our business and staff travel; many of which use natural resources and cause carbon emissions.

The actions in this plan are grouped into three focus areas, each addressing the key risks and opportunities from an environmental sustainability perspective. In identifying these risks and opportunities, we have taken into account our internal and external contexts to ensure we are well positioned for a positive, clean and resilient future.

The plan is all about continuous improvement and therefore does not include elements of environmental

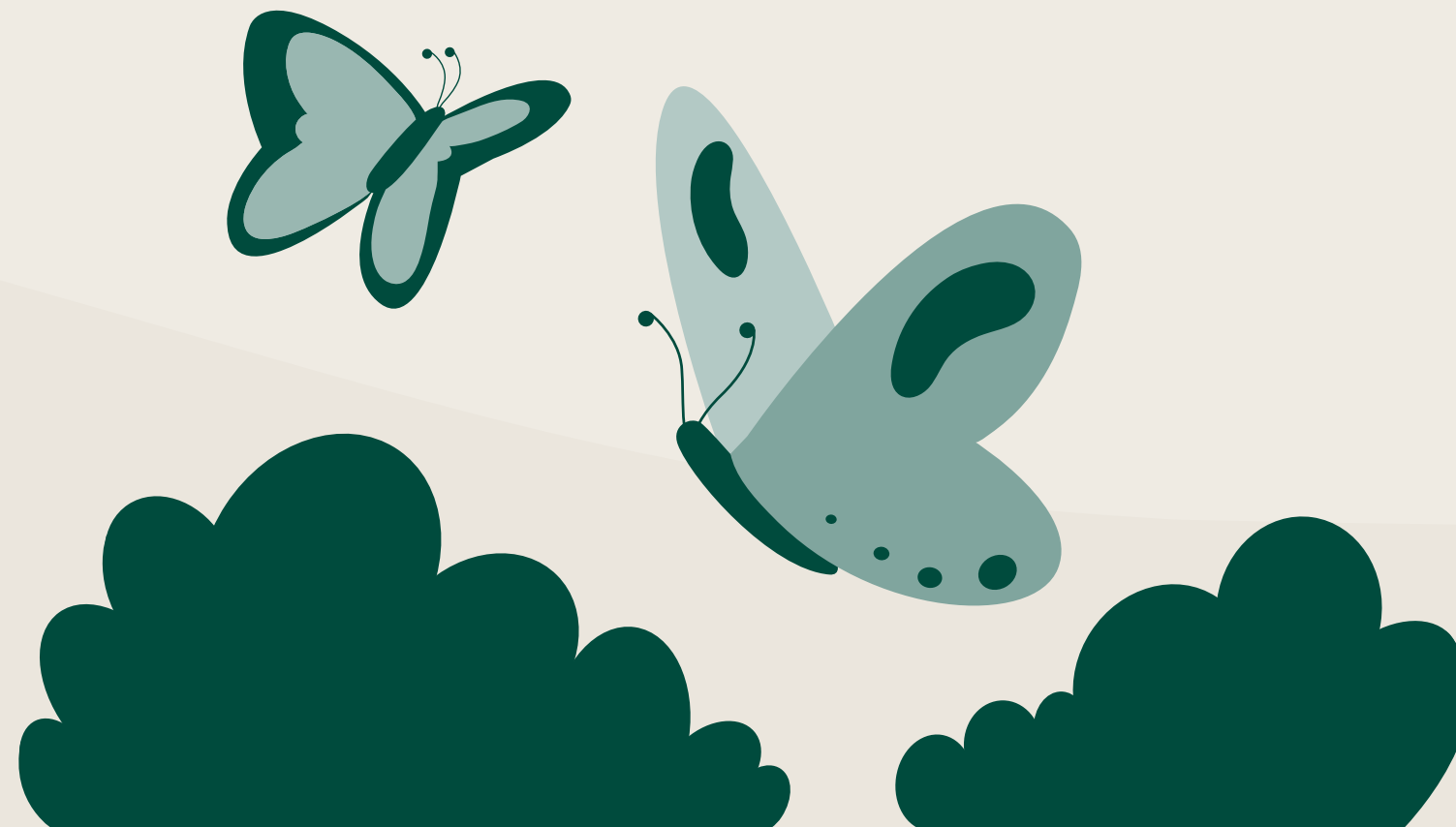
sustainability that are already well established and integrated into our business strategy and operations.

For example:

- Environmental compliance is already an integral part of how we operate
- The ongoing identification, mitigation, management and reporting of climate risks
- Sustainable development principles and practices which are set out in WBP Landscape Plan and Sustainable Development Guidelines.

To measure our progress and to be clear on what we are aiming for, this plan includes measures and targets that related to the initiatives set out in this document. Broader organisational targets are not included and will be developed over time, for example during the creation of our carbon emissions reduction plan.

The participation of our employees, visitors and lessees is important in the delivery of our initiatives and goals and we will ensure that they are offered educational resources, informative and practical information and opportunities to be involved in on-site activities.



Environmental Values

Our organisational values drive our behaviours. We embed them into all facets of our business across strategy and operations.

Ethics

Caring for natural resources for current and future generations, taking only what we need. It's the right thing to do.

Accountability

Everyone has a role in protecting our natural assets and behaving responsibly towards the environment.

Respect

Resources are finite and sensitive to human and natural pressures. Where our natural environment is at risk we will adapt to protect it and in doing so we will strive for resource efficiency.

Teamwork

Environmental management is integrated across our business and we work together to achieve maximum outcomes through this environmental Sustainability Plan and beyond. This includes engaging with our Team, Lessees, Visitors, Community, Partners and Suppliers.



Climate and Nature

Carbon Management and Emissions Reduction

WBP has aligned with the SA Government’s Climate Ready, Net Zero Emissions for Government Operations program and target aiming to be net zero by 2050. We are committed to developing a carbon management and emissions reduction plan in 2026, setting out how we will work towards net zero. A set of targets for each key activity will be set, e.g., optimising on-site renewable energy generation and reducing overall energy consumption by a measure of intensity relative to WBP operations.

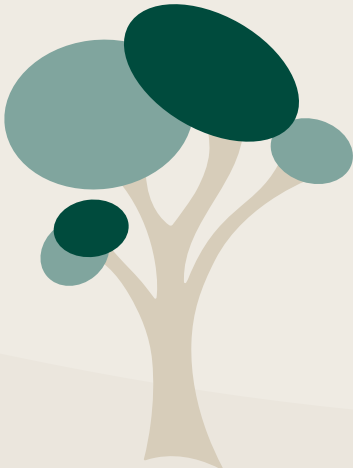
We have been measuring our Scopes 1, 2 and 3 carbon emissions since 2020/21 and reporting the results annually to the West Beach Trust Board. We have also allocated an annual budget to emissions reduction initiatives which have resulted in greater energy and water efficiency, the reduction of paper consumption and better waste management.

In creating our emissions reduction plan, we will undertake a comprehensive assessment of potential opportunities and their cost benefit. This will include, as priorities, electrification (removing natural gas), assessing additional renewable energy capacity, battery storage and reducing potable water use.

Low Footprint Stays

WBP plans to develop incentives for visitors to choose Low Footprint Stays, i.e., opt out of fresh linen and towels for a chosen number of nights. This initiative will cut carbon emissions by reducing laundry, saving energy and water and empowering discerning visitors to choose the level of service they receive during their stay and receive a reward for doing so.

Nature and Biodiversity



Initiatives, Targets and Measures

Initiatives	Performance Targets and KPIs
Plan for a new Biodiversity area in the Golf Precinct.	Increase plantings by 20% by 2027 (an additional 2265 plants)
Increase native plantings across the entire Precinct.	In Year 1, we'll establish our benchmark, then set and track KPIs to guide our progress moving forward.
Create low-footprint stays.	Completed carbon management and emissions reduction plan and targets by end 2026.
Develop a carbon management and decarbonisation plan.	New biodiversity corridor approved and ready for development by early 2027.
Partner with a local environmental charity to provide accommodation visitors with an opportunity to contribute to the natural environment and to SA's Biodiversity Act commitments.	\$500 donated to Trees for life in 2026 and \$1,000 in 2027
	Contribute to Sustainable Development Goals 7, 13 and 15.

Human health and wellbeing are inextricably linked to nature. We have the capacity to influence better outcomes for nature across our land and raise awareness of the value of it and our roles as stewards.

WBP has always participated in the SA Government’s West Beach dune restoration project. This regular planting contributes to the stability and resilience of the sand dunes and provides habitat for native fauna. Both are integral to the amenity of our precinct.

In 2024, WBP engaged ecologists to undertake a baseline fauna study along a revegetated creek line within the WBP Golf precinct. These studies identified a variety of species of flora and fauna and provided WBP with baseline data against which to measure the biodiversity outcomes from a proposed new wetland.

Initiatives in this sub-section are mainly aimed at increasing WBP positive impact on nature and visitor amenity. We have succeeded in securing funding to develop a new Biodiversity area in the WBP Golf precinct and planning will be underway during 2026. Our annual native planting activities will also continue.

Plans are underway to partner with a significant local environmental charity to give accommodation visitors the opportunity to contribute to the natural environment via donations, as an optional contribution during their stay at WBP.

Finally, the SA Government passed its first-ever Biodiversity Act in 2025, marking a major milestone in protecting native plants, animals, and ecosystems — while also helping to address the impacts of climate change. WBP aims to contribute to the aims of this Act including engaging visitors in the new general duty for all South Australians to protect biodiversity.

Smart Purchasing and Waste Management



Initiatives, Targets and Measures

Initiatives

- Introduce recycling bins to cabins at both accommodation properties.
- Introduce organic waste disposal in waste bays.
- Formally launch Borrow and Reuse Station at the Holiday Park.
- Implement paperless housekeeping operations.
- Quantify and promote savings through circular economy initiatives.
- Incorporate new evaluation tool into purchasing framework.
- Assess the feasibility of exiting the State Government electricity procurement contract and securing a renewable energy supply contract for WBT.

Performance Targets and KPIs

- Targets for the following will be determined in 2025:
- Reduction in total landfill waste
 - Reduction in landfill waste per guest night (Holiday Park and Retreat)
 - Reduction in landfill waste per round (Golf Course)
 - Increase in recycling by stream
 - Housekeeping operates at zero paper use by 31/12/27.
- New recycling and organic bins in place.
- Borrow and Reuse Station officially launched.
- Savings from waste initiatives quantified and promoted.
- Evaluation tool integrated into procurement framework.
- Contribute to Sustainable Development Goals 12 and 13.

Reduce Waste
Going to Landfill

Waste management in our accommodation facilities is challenging however we intend to facilitate better waste disposal throughout the Precinct, aiming for less waste to landfill and more recycling (as a percentage of total waste).

In 2023/24, landfill waste was responsible for 19% of WBP carbon emissions with 414 tonnes going to landfill, 166 tonnes being recycled and 320 tonnes of green waste. Ultimately WBP aims to significantly cut waste going to landfill and we will set targets later in 2025 following consultation with our new waste contractor. We have already successfully introduced the three-bin system into our back-office areas.

The SA Government has released its draft waste strategy: Accelerating SA’s transition to a circular economy: South Australia’s waste strategy 2025–2030. WBP will use elements of the published strategy to assist our approach. For example, we will adopt targets using similar measures to those set out in the strategy, adjusted to our industry.

In partnership with our new waste contractor we will improve signage and educational and instructional material to assist in improved waste outcomes. We will introduce recycling bins at our cabins, organic recycling in waste bays across the precinct and explore soft plastics recycling opportunities locally.

A ‘Borrow and Reuse’ station was introduced informally in 2025 and will be formalised with appropriate signage in 2026. Paperless housekeeping will be facilitated through new software thereby cutting paper and energy use, as well as toner cartridges (which we recycle).

We will quantify and promote our savings through these and existing initiatives.

Smart Purchasing

In 2023/24, purchased goods and services made up 46% of WBP carbon emissions (calculations based on cost). Our purchasing choices are guided by various criteria including social and environmental sustainability. Naturally economics is a priority in many decisions however we seek other outcomes where financially viable.

To drive improvements in environmental (and societal) outcomes, and to assist our team in reviewing purchasing options, WBP will introduce a new evaluation tool into our procurement framework. The tool has prioritised the criteria set out below in Table 1.

Table 1: WBP Purchasing evaluation tool standard decision criteria. Weightings are given to each based on the good or service being procured

Sustainable Procurement Priority Criteria	Description
Environmental benefit (impact), including carbon emissions reduction	To what extent is this initiative expected to contribute to WBP vision, with particular emphasis on carbon reduction, biodiversity enhancement, improved climate resilience, reduced waste, etc.?
Strategic alignment	How closely does this initiative align with WBP strategic goals?
Government requirements	To what extent will this initiative align with and meet SAG requirements, policies and goals?
Social benefit (impact)	To what extent will this initiative bring social benefits (education, amenity, engagement) and opportunities to collaborate with community?
Culture, engagement and capacity	To what extent will the initiative serve to enhance organisational culture, build staff capability and generate professional development opportunities? How much will it assist in attracting and retaining staff?
Financial sustainability	What is the quantifiable cost/benefit of this initiative and is it acceptable bearing in mind the potential environmental and other outcomes envisaged from this initiative? Is there any government financial support for this initiative?

Education, Engagement and Brand

Education

Environmental sustainability is not just about the environment itself. It is also about people’s association with it and the health and other benefits that stem from our inter-connection with nature.

WBP has the capacity to influence environmental outcomes whilst creating greater natural amenity for the people within our WBP community. The WBP precinct attracts a broad range of visitors who come to stay for breaks, as well as members of the local community who visit for recreational, sporting or other purposes. We also employ around 190 people, each of whom are important to the achievement of our environmental goals. The more we involve, educate and engage our community and employees the better the overall outcomes will be.

We encourage our employees to help us to excel in sustainability - to work and travel sustainably and to embrace opportunities to learn about better ways of operating, why nature and biodiversity matter and how everyone can contribute to reducing our carbon footprint.

Our guests will be offered engaging and educational information and activities which we hope will translate into a greater overall appreciation of nature and our role in protecting it, as well as improvements in waste and energy consumption.

Initiatives, Targets and Measures

Initiatives

- Develop an environmental initiative to include in the Holiday Parks Activities Program.
- Develop a green brand for West Beach Parks.
- Seek and apply for an appropriate and industry-specific environmental accreditation by December 2026.

Performance Targets and KPIs

- Environmental accreditation achieved in 2027.
- Collect data on number of participants in Activities Program.
- Green branding launched and embedded across WBP communications media.
- Contribute to Sustainable Development Goals 12 and 13.

Engagement

As part of our activity program for holidaymakers we will develop fun action-learning initiatives based around environmental matters with the aim of connecting people to nature. We will also increase informative signage across the Precinct and via guest information, enabling visitors to understand our focus and achievements in environmental sustainability and helping them to help us to reach our goals.

Our proposed Low Footprint Stays initiative is also expected to inform and engage people in reducing WBP carbon footprint, specifically energy, waste and water consumption.

Our staff will continue to be involved in externally driven environmental initiatives, such as World Environment Day and Clean up Australia Day.

Green Brand and Accreditation

The initiatives and outcomes of this Plan, as well as achievements to date, will provide opportunities for us to receive official recognition for meeting best practice standards for our environmentally conscious operations and achievements.

WBP will create its own green brand to enhance our promotions and subsequently seek to receive external recognition through an appropriate environmental accreditation. This will build our overall brand, endorse our claims and help to position WBP as a leader in environmental sustainability in the tourism industry and holiday parks sector.

Governance Framework



The way in which environmental sustainability is built into our governance, accountability and reporting systems is important to its ongoing success and transparency.

Policy and strategy

- Environmental Sustainability Policy
- Master Plan
- Landscape Plan
- Environmental Sustainability Plan
- Sustainable Building Principles Plan

Accountability

- Across Board, Executive and staff roles

Risk management, measurement and reporting

- Strategic Risk Register
- Board quarterly environmental dashboard
- Annual report

Roles and Responsibilities

Environmental sustainability is everyone's responsibility and appropriate accountability, and key performance indicators, are incorporated into individual position descriptions. The Environmental Sustainability Plan is the responsibility of the Executive Team, reporting to the Chief Executive Officer. The Executive Team will ensure that the initiatives within this plan are allocated appropriate resources within their business plans to ensure their delivery and to meet our targets.

The WBP Board has overall responsibility for the oversight of all risks and opportunities facing the Precinct.

Measurement, Monitoring and Reporting

Progress against the initiatives and targets in this plan will be monitored quarterly. WBP environmental compliance is already subjected to regular external review.

WBP existing utilities reporting will be expanded to other priority areas identified in this plan. We will also establish a carbon management plan detailing the basis of preparation and data collection processes for the ongoing measurement and external review of WBP carbon emissions.

Progress against the objectives, actions and measures in this plan will be reviewed quarterly by the WBP Executive Team and reported to the Board.

Resourcing

Most of the action in this Plan will be delivered using internal resources and allocated capital and operating budgets. We will use external experts to assist with initiatives that have a technical element that is outside of our expertise. We will also continue to work closely with the SA Government to deliver mutually beneficial initiatives.

Appendix

Appendix A—Environmental Sustainability Plan Action List 2026–2027

Focus Area	Initiative	Priority
Climate and Nature	Introduce “Low Footprint Stays”	Level 1
	Develop and commence carbon emissions reduction plan for energy (electricity, gas, fuel) and water	Level 1
	Plan for the development of a new Biodiversity area in the Golf Precinct and increase biodiversity across the Precinct	Level 2
	Partner with a charity to introduce optional accommodation guest donations	Level 2
	Develop a carbon management plan (net zero pathway)	Level 3
Education, Engagement and Brand.	Incorporate an environmental activity program for the Holiday Park	Level 1
	Develop a “green” brand	Level 1
	Environmental sustainability certification	Level 2
Smart Purchasing and Waste Management	Introduce recycling bins in cabins	Level 1
	Introduce formal borrow and reuse station in Holiday Park	Level 1
	Implement paperless housekeeping	Level 1
	Assess the feasibility of exiting the State Government electricity procurement contract and securing a renewable energy supply contract for WBT	Level 1
	Integrate purchasing evaluation tool into procurement processes	Level 2
	Waste signage and education	Level 2
	Explore options for soft plastics recycling	Level 2
	Promote enviro initiative savings to stakeholders	Level 2
	Implement organic waste collection and disposal across the Precinct	Level 2

Legend

Level 1 — Completion by 30/06/2026

Level 2 — Completion by 31/12/2026

Level 3 — Completion by 31/12/2027