



**West Beach Parks**  
holiday · sport · adventure

# Environmental Sustainability Plan 2022-2025

#### ACKNOWLEDGEMENT OF COUNTRY

**West Beach Parks acknowledges that we are located on the traditional land of the Kurna people of the Adelaide Plains and pays respect to Elders past and present.**

**We recognise and respect the cultural heritage, beliefs, and relationships with the land. We acknowledge that they are of continuing importance to the Kurna people living today.**

# Table of Contents

Who we are	4
Environmental Values	5
Scope	6
Our Commitments	7
Key Achievements	8
Environmental Compliance	9
Carbon Emissions Review	10
Action Plan Goals	
Responsibilities and Reporting	16

# Who we are

Welcome to the West Beach Parks (WBP) Environmental Sustainability Plan 2022-25 (The Plan).

Sustainability is at the heart of everything we do at WBP.

WBP is a world-class tourism, sport and recreation Precinct, providing exceptional leisure experiences. We are responsible for managing the West Beach Recreation Reserve, an area of significant natural assets, and its commercial and community facilities including accommodation, boating, a coastal park, golfing, leisure and sports.

WBP is bound by the requirements of the **West Beach Recreation Reserve Act 1987** and therefore responsible for managing a wide range of environmental risks and opportunities.

WBP commitment to managing environmental challenges and seizing opportunities makes good business sense and will lead to greater resilience, stronger risk mitigation, improved productivity, cost savings and benefits

for our team, visitors, lessees and community. It will also enhance nature and strengthen our connection with cultural heritage.

WBP believe that we can successfully balance our environmental, community and economic responsibilities knowing that they are complementary to one another and to long-term sustainability. Complying with our legislative and regulatory requirements goes without saying and through this Plan we will build on our existing achievements in environmental sustainability.

WBP has already gone beyond those commitments and, through this Plan, we will reach further. This marks a new phase which will see WBP accelerate its ambition in environmental sustainability throughout our core functions and within our sphere of influence - to our lessees, suppliers and partners.



# Environmental Values

Our organisational values drive our behaviours. We embed them into all facets of our business and the way we do things.



# Scope

By 'environment', we refer to the landscapes, plants and animals that provide significant richness to West Beach Recreation Reserve and beyond. As stewards of this important area, our role is to protect and enhance these natural assets in addition to maintaining land and buildings. WBP therefore has a significant environmental compliance role to play.

We also have a responsibility to respond to the changing climate. As global warming accelerates, acting to minimise its impacts has become increasingly important, as has identifying and managing the risks associated with it. WBP will continue to manage the risks of climate change by ensuring that our infrastructure and operations, including new developments, are resilient to changes in the climate. We will also play our part in reducing greenhouse gas emissions caused by our operations and across our supply chain.

Our environmental impacts include carbon emissions, emissions to land and water, consumption of utilities, key inputs such as fertilisers and other chemicals, the varied goods and services we procure, and our business and team travel.

The participation of our team is critical to the delivery of this plan and we will ensure that they are given the necessary education, awareness and tools to make good on our commitments and deliver on our targets.

Environment also includes community - the two go hand in hand. The delivery of this plan will see new and exciting initiatives that will offer ways for people to get involved in activities on-site and participate in environmental causes.




# Our Commitments

WBP is committed to its role as custodian of the West Beach Recreation Reserve and to enhancing and promoting its environmental sustainability for today and for generations to come. Our Environmental Policy commits us to managing our assets and running our operations in an environmentally sustainable and responsible manner.


This Environmental Sustainability Plan aims to advance the delivery of our ongoing environmental commitments.

- Protect and enhance local biodiversity and cultural heritage
- Value the environment and communicate its value to those who utilise the Reserve and associated facilities including customers, visitors, lessees and team members
- Meet and where relevant exceed environmental legislation, regulations and other requirements
- Act on climate change by reducing our carbon emissions and adapting our operations and infrastructure to projected changes in climatic conditions
- Embed good environmental practices into everyday activities, processes, procurement and performance management and into future development
- Establish baseline measurements and suitable objectives and targets aimed at preventing pollution and improving environmental performance along with programs to achieve them
- Continually improve environmental performance relative to growth by seeking ways to reduce the use of natural resources and waste
- Provide appropriate information, awareness, education, training, supervision and resources as applicable to team members, visitors, lessees and contractors to ensure a clear understanding of roles, responsibilities and accountabilities for eliminating or minimising environmental impacts
- Partner with lessees, visitors, customers, suppliers and contractors on our environmental goals
- Consult and engage with our Team, Lessees, Visitors, Community and Partners, including local communities and suppliers on relevant environmental matters including risks and opportunities.

# Key achievements



**120kW**  
solar installed on-site



Voltage stabilizer installed resulting in annual savings in electricity of  
**\$13,000**



Ongoing focus on environment and climate change impacts considered when procuring vehicles



Climate change adaptation action plan developed

⚡⚡⚡⚡⚡  
**80%**  
of internal lights converted to LED



Annual tree planting program



Ongoing coastal protection



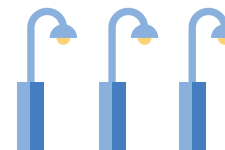
Regularly measuring and reporting utilities data



Vehicle replacement strategy with consideration of reducing heat impact on people



Carbon emissions baseline inventory developed

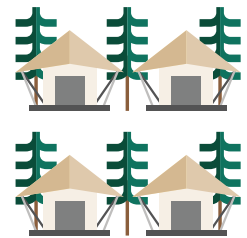


**55%**  
of external street lighting converted to Solar



Water saving initiatives implemented (water harvesting and optimised irrigation on Golf Course)

⚡⚡⚡⚡⚡  
**80%**  
of external street lighting converted to LED



Sustainable design aspects in new accommodation



# Environmental Compliance

WBP has established and maintains an Environmental Management Framework that ensures our compliance with legislation. WBP conducts its activities in accordance with the Environment Protection Act 1993, Airports (Environment Protection) Regulations 1997 (for the section of Commonwealth land leased from Adelaide Airport Ltd) and other relevant Commonwealth, South Australian and local regulations.

WBP maintains a detailed legal register populated with the regulations covering all relevant environmental management obligations. Compliance requirements are translated into risk mitigation actions within WBP operating procedures and other documented guidance. Environmental monitoring is then utilised by WBP to evaluate compliance and prevent, control or reduce environmental impacts associated with its activities.

WBP comprehensive compliance program includes, but is not limited to:

- Legacy soil and groundwater contamination
- Hazardous substances storage and use
- Hazardous waste disposal and recycling
- Irrigation management
- Stormwater protection
- Wastewater treatment
- Weed and pest control

WBP ethos is centred on transparency and collaboration, which extends to regulatory engagement and reporting with agencies such as the Environment Protection Authority and Department for Environment and Water.

An external audit by a qualified environmental auditor is to be conducted annually, providing assurance as to the quality and rigour of WBP Environmental Compliance Program, and will identify opportunities for improvement.

# Carbon Emissions Overview

In 2021 WBP engaged an external consultant to prepare its first carbon footprint or “carbon inventory”, for the financial year 2020-21. This is the base year on which the measurement of future changes can be made and goals can be set.

Carbon emissions are measured in tonnes of carbon dioxide equivalent or ‘tCO<sub>2</sub>e’. WBP carbon inventory has been developed using global best practice methodology which splits carbon emissions into three ‘Scopes’:

### Scope 1:

Emissions over which the organisation has direct control via the ownership or control of buildings, vehicles, equipment and fugitive emissions (refrigerant gases)

### Scope 2:

Emissions associated with electricity purchased from the grid

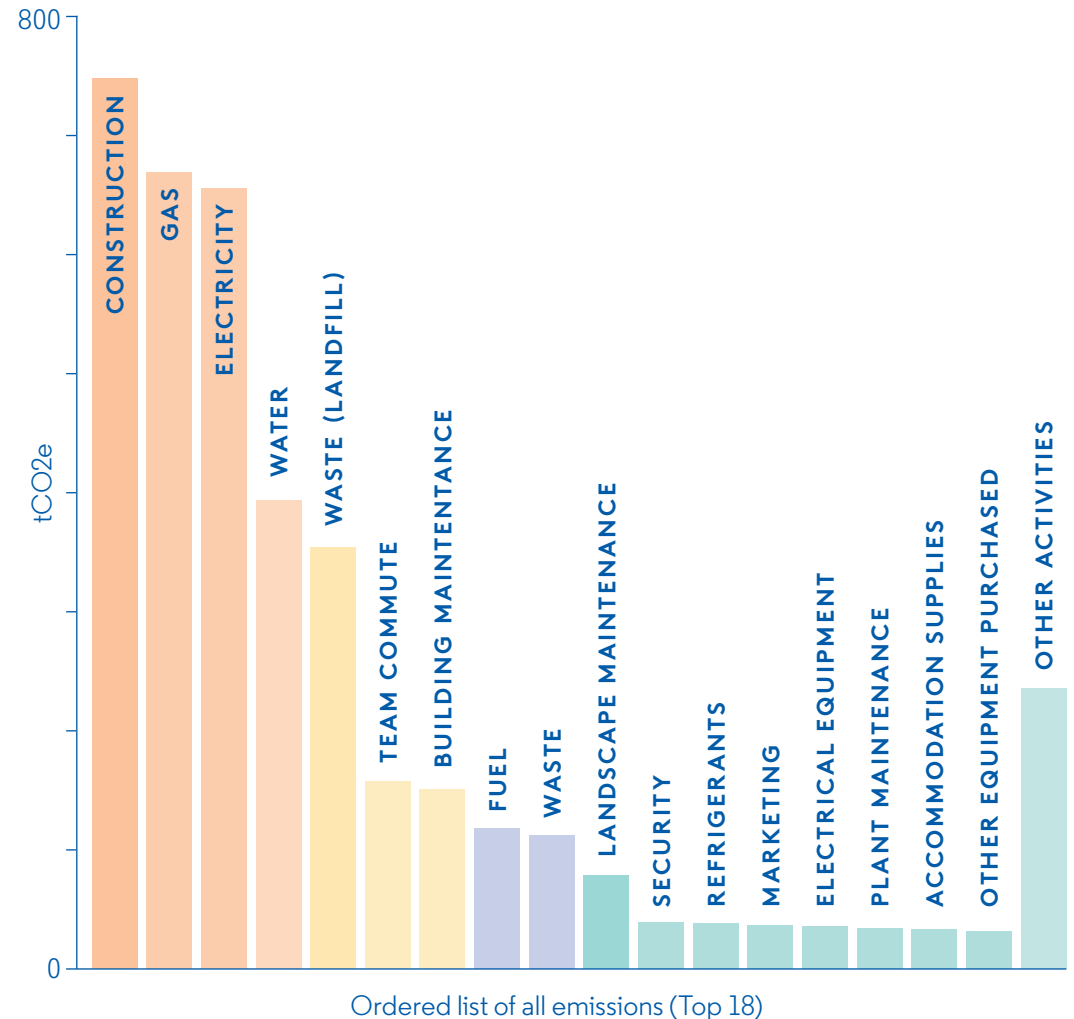
### Scope 3:

Indirect or supply chain emissions including the purchase of goods and services, waste generated, business travel, employee commuting and others

Companies are increasingly choosing to include as many Scope 3 emissions as are relevant and which can be measured. This approach provides more opportunities to influence the emissions reduction of third parties, and to seek improvements in operational processes. Scope 3 is also increasingly included in greenhouse gas reduction targets and carbon neutral claims.

WBP carbon emissions for the financial year 2020/21 amounted to 4,101 tonnes of carbon dioxide equivalent (tCO<sub>2</sub>e). Emissions per \$10,000 of revenue were 2.0 tCO<sub>2</sub>e and 0.04 tCO<sub>2</sub>e per booked room night. The largest portion of the inventory related to building construction (778 tCO<sub>2</sub>e), followed by consumption of natural gas (587 tCO<sub>2</sub>e) and electricity (556 tCO<sub>2</sub>e).

**Figure 1: WBP carbon emissions breakdown →**



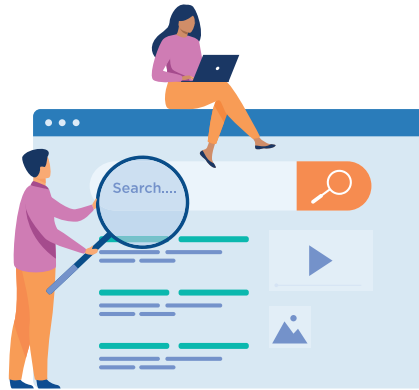
# Action Plan and Goals

The initiatives and targets in this plan are grouped into four areas to guide WBP approach and upon which to measure progress and outcomes.



01

**Climate  
Smart and  
Nature Rich**



02

**Smart  
Purchasing  
& Waste**



03

**Team,  
Lessee, Visitor,  
Community,  
Partner & Supplier  
Engagement**



04

**Together  
with our  
Community**



# Climate Smart and Nature Rich

The aims of WBP Climate Smart Initiatives are to reduce our carbon footprint, ensure that our business, operations and Precinct assets are more resilient to the changing climate and to document and create a plan to enhance the ecosystems of the plants and animals that we share our environment with.

“WBP acknowledges that it is both a contributor to carbon emissions as well as being subject to climate impacts. It understands the importance of acting on climate change by adapting to the changing conditions and actively putting in place measures to reduce carbon emissions where possible”.

Climate projections for the western Adelaide region include increasing average temperatures, more heat waves, lower average rainfall, greater intensity of weather events such as storms and rising sea levels. These could potentially impact our natural environment, our operations, visitors and team. We acknowledge the important role that

WBP must play in looking after the infrastructure, natural resources and plants and animals that are integral to the experiences and services we provide, and to offer a comfortable and safe environment for both our visitors and team members.

WBP has had a Climate Adaptation Action Plan in place since 2019 and is proud to launch its first Climate Statement in conjunction with this plan.

WBP carbon emissions reduction activities include actively measuring, managing and reducing our energy, fuel, water consumption, waste and other relevant activities relative to our revenue. We continually seek more efficient ways to manage our use of resources and make the most of opportunities such as investing in solar power and using reclaimed water for irrigation.

## ANNUALLY WE WILL:

Identify and implement electricity and gas reduction initiatives in line with WBP Asset Management Plan

Deliver our Climate Adaptation Action Plan initiatives including maintaining and adapting our infrastructure, supporting the sand dune replenishment program and developing new policies relating to heat and pests

## IN 2022/23 WE WILL:

Develop a baseline biodiversity index to measure the biological diversity at WBP and feed into our Landscape Masterplan, aiming to enhance the ecosystems within the Precinct and surrounding areas

Review vehicle fleet procurement strategy and feasible timing of moving to alternative fuels

Investigate increasing on-site solar and vehicle charging stations

Develop a Landscape Masterplan for a climate smart Precinct

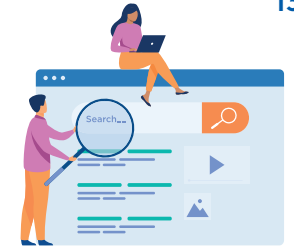
Develop ongoing data collection to enable the regular measurement of our carbon emissions

## IN 2023/24 WE WILL:

Develop sustainable development principles and guide

### Climate Smart & Nature Rich Targets

- Measurable targets will be determined once the solar, vehicle and other studies have identified what level of emissions reduction is achievable.



# Smart Purchasing and Waste

Our office operations are going green!

We will extend the Climate Smart theme into our everyday office and operational activities, including procurement. Initiatives will see a focus on reducing waste to landfill, increasing recycling and reuse and decreasing our use of copy paper, energy and transport fuel.

In line with the United Nations' 2022 global treaty End Plastic Pollution, we will explore ways to cut our use of plastic and other waste across the Precinct.

According to the United Nations Environment Program some 11 million tonnes of plastic waste flows annually into oceans and the production and disposal of plastic causes greenhouse gas emissions. Also, exposure to it can harm human health.

Through our procurement, we also aim to support local communities and to ensure we buy ethically and with an environmental conscience. We will update our procurement framework to assist our team to make informed decisions.

**IN 2022/23 WE WILL:**

Develop a plan to green our offices, check-in areas and housekeeping operations to reduce energy, paper, waste and travel

Investigate opportunities and develop a strategy to reduce landfill waste across the Precinct

**IN 2023/24 WE WILL:**

Implement three bin system across all offices, shops and reception areas

Include ethical, local and environmentally responsible sourcing in purchasing

**Smart Purchasing & Waste Targets**

- Zero office waste to landfill by end 2023
- 25% less paper use compared with baseline
- 25% green waste diverted by June 2023
- Reduce landfill and increase recycling rate
- Single-use plastic spend reduced by 100%
- Zero Golf office and shop waste to landfill by end 2023
- 30% locally sourced products by June 2023 (by \$ value)

# Team, Lessee, Visitor, Community, Partner & Supplier Engagement



The more we involve, educate and engage our team and visitors, the better the outcomes from this plan will be. Our team will continue to be involved in environmental initiatives, such as World Environment Day and Clean up Australia Day. They will also learn how they can contribute to improving our environmental impact and reducing our carbon footprint, through their everyday activities.

Already, WBP provides a three-bin waste system across the Holiday Park and Retreat. We will also provide opportunities for our visitors to be involved in our environmental initiatives and to contribute to environmental causes that are linked to our wonderful landscape.

## ANNUALLY WE WILL:

Share progress and achievements against this plan

Celebrate World Environment Day & Clean up Australia Day through team activities

## IN 2022/23 WE WILL:

Launch the Environmental Sustainability Plan to our team

Develop a plan to encourage lower carbon emitting means of commuting to and from work

## IN 2023/24 WE WILL:

Explore providing team transport within the Precinct to reduce travel in combustion engine vehicles

Develop initiatives for guests to voluntarily donate to environmental causes

Hold a community planting day at the West Beach sand dunes in conjunction with Green Adelaide and the Department for the Environment and Water

## Team and Visitor Engagement Targets

- 4 environment-related team engagements per year
- 10% increase in number of team volunteering hours compared to a base year
- 5% per annum decrease in number of kilometres team commute by car
- 10% per annum reduction in number of kilometres team travel by car for work from 2023/24
- Raise \$1,500 per annum for external environmental programs / partnerships

# Together with our Community



Environmental sustainability is not just about ‘the environment’ itself. It is also about people’s association with it and the benefits that stem from nurturing our surroundings to preserve a healthy environment. After all, our own wellbeing is interconnected with that of our ecosystems.

WBP has the capacity to influence environmental outcomes simultaneously with creating good outcomes for the people that share our WBP community – our lessees, our neighbours, our team and our visitors.

## ANNUALLY WE WILL:

Invite lessees to submit for the annual WBP Environmental Sustainability Award

## IN 2022/23 WE WILL:

Develop a communications plan to promote and communicate environmental successes and initiatives

Investigate the feasibility of a community garden next to The Studio and develop if achievable

Collaborate with local council on partnering opportunities within the Precinct

## IN 2023/24 WE WILL:

Create an on-site book swap station

Launch a lessee environmental education and awareness plan

Launch a competition for an annual lessee award for best sustainable initiative implemented

Explore opportunities to donate cabin furniture to local charities

## IN 2024/25 WE WILL:

Investigate the feasibility of developing community walking trails within the Precinct

## Together with our Community Targets

- One lessee environmental sustainability award per year
- Others are to be developed as initiatives are investigated.

# Responsibilities and Reporting

The Environmental Sustainability Plan is the responsibility of the Executive Team, reporting to the Chief Executive Officer. The Executive Team will ensure that the initiatives within this plan are allocated appropriate resources within our business planning to ensure their delivery.

Progress against the initiatives and targets in this plan will be monitored quarterly and our environmental compliance will be subject to regular external review.

WBP existing utilities reporting will be expanded to other priority areas identified in this plan. We will also set up an ongoing data collection process to record the information that is relevant to our carbon emissions. This will enable regular reporting to occur, which will be no less than bi-annually.







**West Beach Parks**  
holiday · sport · adventure

**By choosing not to print our  
Environmental Sustainability Plan,  
West Beach Parks is saving around  
20,000 pieces of paper.**

For further information contact:  
[environment@westbeachparks.com.au](mailto:environment@westbeachparks.com.au) T: 08 8355 7300